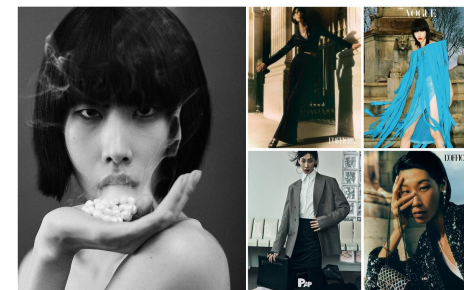




FEMALE MODELS



Morph

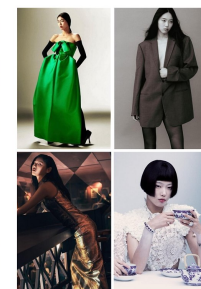
Morph Management, 36 Jangmun-ro Yongsan-gu Seoul Korea ZIP 04393 | Phone: +82 2 797 7200

Lee J Moon (@iam_2m)
Height 180(5'11") Bust 78(32") A. Waist 60(23.5") Hips 87(34") Shoes 220mm Heel
Black Eyes Black Born in 1992



Morph

Morph Management, 36 Jangmun-ro Yongsan-gu Seoul Korea ZIP 04393 | Phone: +82 2 797 7200



Sung Yu Jin (@sungyujiin)
Height 176(5'9") Bust 81(32") A. Waist 58(22") Hips 83(32.5") Shoes 240mm Heel
Black Eyes Black Born in 1987



Morph

Morph Management, 36 Jangmun-ro Yongsan-gu Seoul Korea ZIP 04393 | Phone: +82 2 797 7200



Choi Jin (@cjin)
Height 172(5'7.5") Bust 79(31") A. Waist 58(22") Hips 89(35") Shoes 250mm Heel
Brown Eyes Black Born in 1999

Morph

Morph Compcard Update Women
Born in 1900